



About

- Fashion cargo trousers.
- No label for limitless customisation.
- Perfectly smooth surface for optimum customisation.

97% organic cotton and 3% elastane. Twill fabric. Faded look. Garment dyed as a whole after assembly: colours may vary between products. Waistband with belt loop and waistband inner finished with a contrasting chain stitch. Button waistband and recycled metal zip fly with inner waistband button for extra hold. Two front pockets and a hidden pocket with invisible zip in the pocket bag on the wearer's right. Fob pockets with flap and recycled plastic button on the sides. Two back pockets with flap, piped opening and recycled plastic button. Rib stitching on the front and back for reinforcement. Single overstitching on the leg hem. No brand label, only a tear-off size tag for easy decoration.

250 g/m²

Sizes

8 UK (34 FR) 10 UK (36 FR) 12 UK (38 FR) 14 UK (40 FR) 16 UK (42 FR) 18 UK (44 FR) 20 UK (46 FR)

More information

Logistic

1 20

Country of origin

BD - Bangladesh

Customs code

61046200

Washing instructions



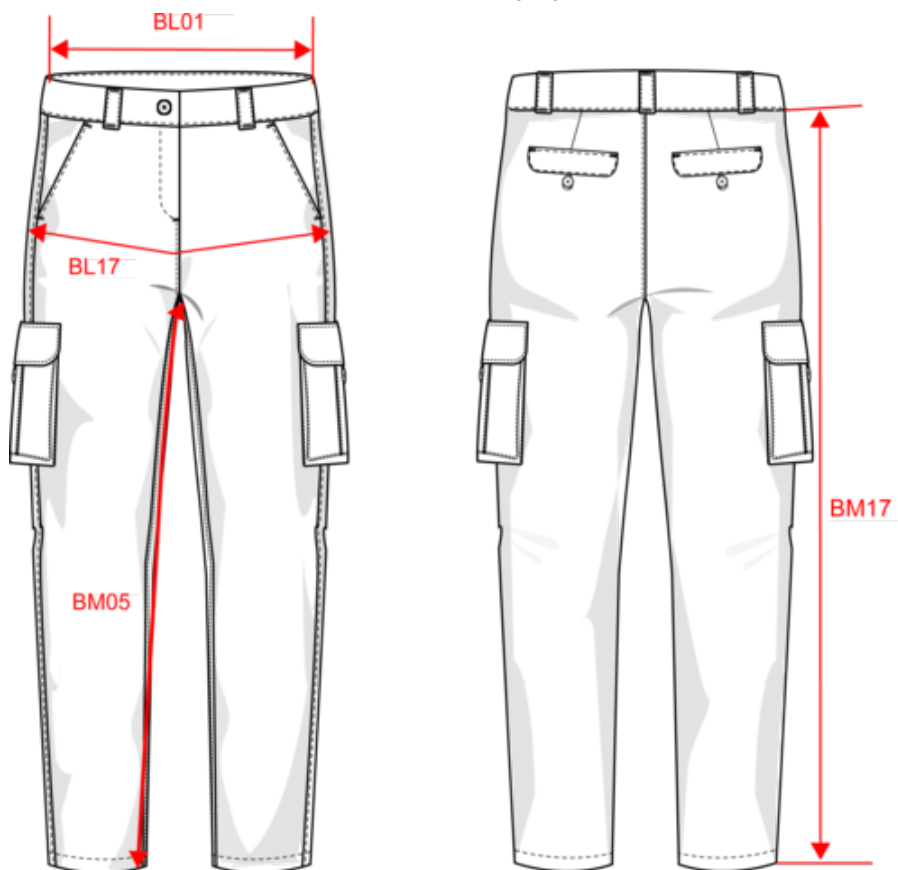
Colours

Washed black
 Washed Organic Khaki

Certifications



Dimensions (cm)



Measurements in cm	34	36	38	40	42	44	46
BL01 - 1/2 waist width (buttoned up and front band over back band)	34.50	36.50	38.50	40.50	42.50	44.50	46.50
BL17 - 1/2 hip width (measured parallel to waistband)	47.50	49.50	51.50	53.50	55.50	57.50	59.50
BM05 - Inseam length	78.00	78.00	78.00	78.00	78.00	78.00	78.00
BM17 - Side length (waistband excluded)	99.00	99.50	100.00	100.50	101.00	101.50	102.00

NS741
Ladies' cargo trousers - -250g

Colours information

Washed black
RVB : 43,39,42
Pantone C : Neutral Black
Pantone TCX : 19-4008TCX

Washed Organic Khaki
RVB : 85,89,77
Pantone C : 418C
Pantone TCX : 19-0312TCX

Logistic



1



20

Sizes	Width (cm)	Height (cm)	Length (cm)	Net weight (kg)	Gross weight (kg)	Pieces/Box	Pieces/Bundle
34 FR	40.00	24.00	60.00	8.60000	10.30000	20	1
36 FR	40.00	24.00	60.00	9.10000	10.80000	20	1
38 FR	40.00	24.00	60.00	9.40000	11.10000	20	1
40 FR	40.00	24.00	60.00	9.90000	11.60000	20	1
42 FR	40.00	26.00	60.00	10.50000	12.20000	20	1
44 FR	40.00	26.00	60.00	10.90000	12.60000	20	1
46 FR	40.00	26.00	60.00	11.20000	12.90000	20	1