



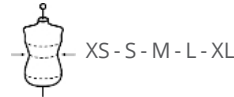
About

- No label: 100% customisable for your brand.
- 3-yarn LSF (Low Shrinkage Fleece) design: hard-wearing and wash-resistant.
- Soft surface and cosy inner.

65% organic cotton and 35% post-consumer recycled polyester
 Combed cotton Oversized fit with dropped shoulders 3-ply brushed fleece, LSF (Low Shrinkage Fleece: pre-shrunk fleece) 1/2 circle in the back Enzyme-washed Flat organic cotton drawstring hem with recycled metal tips Cover stitch on neckline, shoulder seams, armholes and cuffs 2x1 ribbed collar and cuffs Inner taped neckline with herringbone
 No brand label, only a tear-off size tag for easy decoration

280 g/m² ♀

Sizes



More information

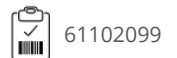
Logistic



Country of origin



Customs code



Washing instructions



Certifications

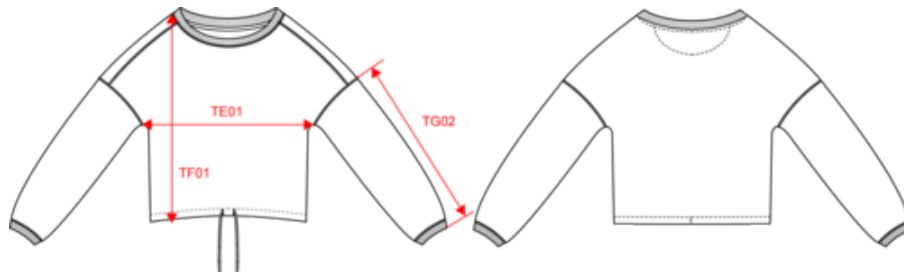


Colours



NS429
Ladies' crew neck sweatshirt - 280g

Dimensions (cm)



Measurements in cm	XS	S	M	L	XL
TE02 - 1/2 chest width at armhole bottom line	61.00	64.00	67.00	70.00	73.00
TF01 - Total height from HSP	47.00	49.00	51.00	53.00	55.00
TG02 - Long sleeve length	41.50	42.25	43.00	43.75	44.50

NS429
Ladies' crew neck sweatshirt - 280g

Colours information



Apricot
RVB : 254,166,127
Pantone C : 1565C
Pantone TCX : 15-1331TCX



Black
RVB : 35,35,37
Pantone C : Black
Pantone TCX : 19-4004TCX



Ivory
RVB : 236,231,218
Pantone C : 7534C
Pantone TCX : 11-0701TCX

Logistic



5



20

Sizes	Width (cm)	Height (cm)	Length (cm)	Net weight (kg)	Gross weight (kg)	Pieces/Box	Pieces/Bundle
XS	40.00	24.00	60.00	5.70000	7.10000	20	5
S	40.00	24.00	60.00	6.14000	7.50000	20	5
M	40.00	24.00	60.00	6.52000	7.88000	20	5
L	40.00	26.00	60.00	6.98000	8.34000	20	5
XL	40.00	26.00	60.00	7.40000	8.80000	20	5