

NS418
Unisex sweatshirt - 275gsm



Made in Portugal 100% organic cotton Unisex Straight fit Light French Terry inner Garment dyed after assembly: colours may vary slightly from item to item Neck trim Cover stitch on armholes, neck, cuffs and bottom hem Side slits with herringbone back

275 g/m²

Sizes

XXS - XS - S - M - L - XL - XXL - 3XL - 4XL

More information

Logistic

5 20

Country of origin

PT - Portugal

Customs code

61102099

Washing instructions

Colours

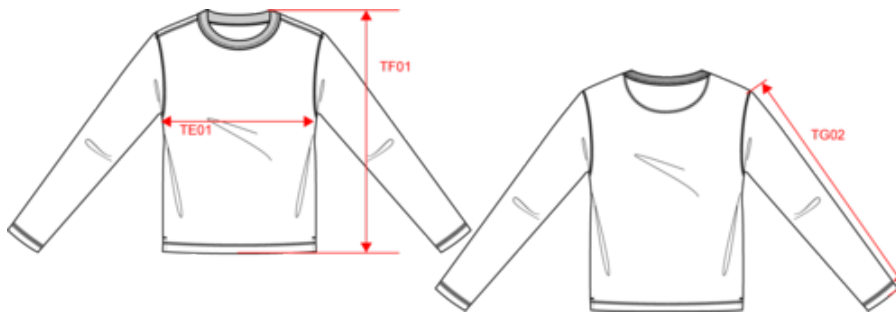
Washed Cream Coffee
 Washed Ivory
 Washed Lemon Citrus
 Washed Navy Blue
 Washed Sea Water
 Washed Sienna
 Washed Slate

Certifications



NS418
Unisex sweatshirt - 275gsm

Dimensions (cm)



Measurements in cm	XXS	XS	S	M	L	XL	XXL	3XL
TE01 - 1/2 chest width at 1.5cm below armhole	46.00	49.00	52.00	55.00	58.00	61.00	64.00	67.00
TF01 - Total height from HSP	65.00	67.00	69.00	71.00	73.00	75.00	77.00	79.00
TG02 - Long sleeve length	60.50	61.50	62.50	63.50	64.50	65.50	66.50	67.50

Colours information



Washed Cream Coffee

RVB : 152,133,117
Pantone C : 7504C
Pantone TCX : 17-1312TCX



Washed Ivory

RVB : 243,232,220
Pantone C : 7534C
Pantone TCX : 11-4202TCX



Washed Lemon Citrus

RVB : 243,240,196
Pantone C : 7499C
Pantone TCX : 11-0617TCX



Washed Navy Blue

RVB : 54,61,75
Pantone C : 432C
Pantone TCX : 19-4023TCX



Washed Sea Water

RVB : 143,185,203
Pantone C : 5503C
Pantone TCX : 14-4313TCX



Washed Sienna

RVB : 136,102,94
Pantone C : 7615C
Pantone TCX : 18-1421TCX



Washed Slate

RVB : 70,79,84
Pantone C : 7540C
Pantone TCX : 19-4220TCX

Logistic



Sizes	Width (cm)	Height (cm)	Length (cm)	Net weight (kg)	Gross weight (kg)	Pieces/Box	Pieces/Bundle
XXS	40.00	25.00	60.00	0.00000	5.50000	20	5
XS	40.00	25.00	60.00	0.00000	6.70000	20	5
S	40.00	25.00	60.00	0.00000	6.98000	20	5
M	40.00	25.00	60.00	0.00000	7.40000	20	5
L	40.00	25.00	60.00	0.00000	8.00000	20	5
XL	40.00	25.00	60.00	0.00000	8.20000	20	5
XXL	40.00	25.00	60.00	0.00000	8.56000	20	5
3XL	40.00	25.00	60.00	0.00000	8.80000	20	5