

KARIBAN

K749

Ladies' above-the-ankle trousers

- Enzyme-washed twill fabric for optimum wash resistance.
- Modern 7/8 fit and peach skin finish for a soft feel and impeccable look.
- Premium Collection.

98% cotton twill / 2% elastane. Enzyme washed fabric for optimal comfort. Above-the-ankle cut with side slit at the hem. 2 Italian side pockets and 1 ticket pocket. 2 back pockets with piping and reinforced seams, only decorative one on white. Buttoned and zip fastening. Waistband with belt loops. Modern style. This product has been specially treated and appears intentionally aged. This manufacturing process results in colour variations between products and makes each piece unique.



8 UK (34 FR) 10 UK (36 FR) 12 UK (38 FR) 14 UK (40 FR) 16 UK (42 FR) 1



More information

Logistic



1



20



BD - Bangladesh

Customs code



62046239



Beige



Black



Dark Navy



White

Washing instructions

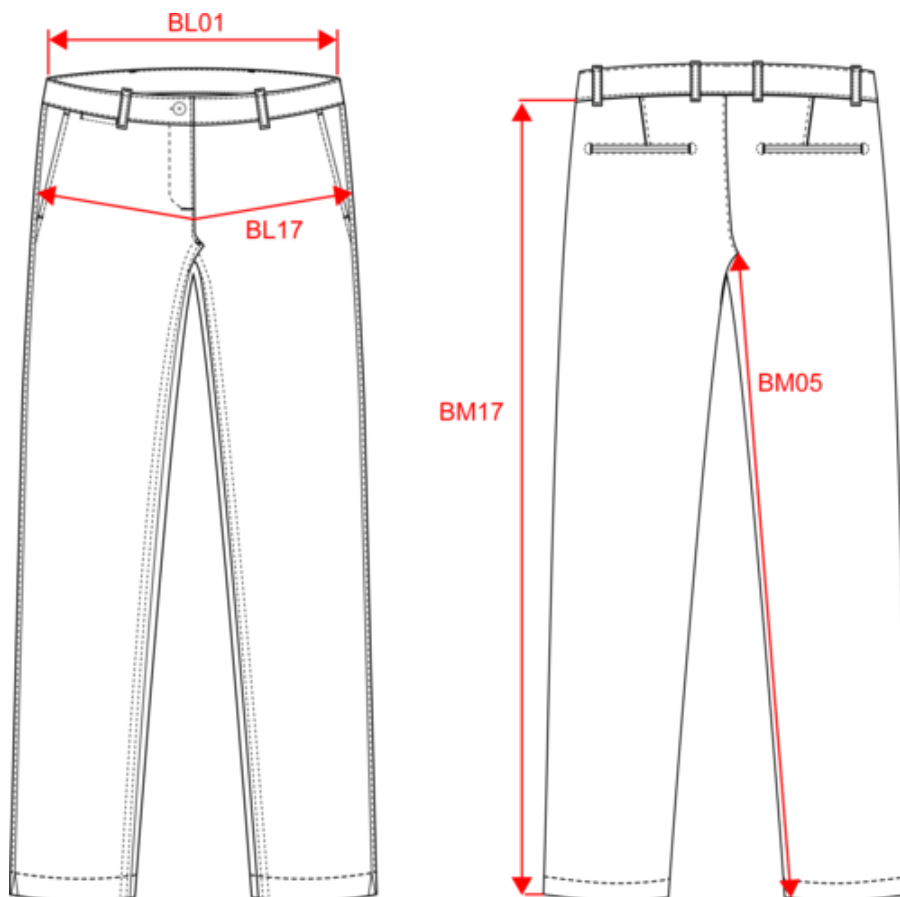


KARIBAN

K749

Ladies' above-the-ankle trousers

Dimensions (cm)



Measurements in cm	34	36	38	40	42	44	46	48
BL01 - 1/2 waist width (buttoned up and front band over back band)	35.40	37.00	39.00	41.00	43.00	45.00	47.00	49.00
BL17 - 1/2 hip width (measured parallel to waistband)	45.00	47.00	49.00	51.00	53.00	55.00	57.00	59.00
BM05 - Inseam length	68.00	68.00	68.00	68.00	68.00	68.00	68.00	68.00
BM17 - Side length (waistband excluded)	86.25	86.75	87.25	87.75	88.25	88.75	89.25	89.75

KARIBAN

K749

Ladies' above-the-ankle trousers

Colours information



Beige
RVB : 170,160,148
Pantone C : 7536C
Pantone TCX : 16-0806TCX



Black
RVB : 35,35,37
Pantone C : Black
Pantone TCX : 19-4004TCX



Dark Navy
RVB : 33,38,45
Pantone C : 426C
Pantone TCX : 19-4007TCX



White
RVB : 236,236,252
Pantone C : White
Pantone TCX : 11-0601TCX

Logistic



1



20

Sizes	Width (cm)	Height (cm)	Length (cm)	Net weight (kg)	Gross weight (kg)	Pieces/Box	Pieces/Bundle
34 FR	0.00	0.00	0.00	0.00000	0.00000	20	0
36 FR	0.00	0.00	0.00	0.00000	0.00000	20	0
38 FR	0.00	0.00	0.00	0.00000	0.00000	20	0
40 FR	0.00	0.00	0.00	0.00000	0.00000	20	0
42 FR	0.00	0.00	0.00	0.00000	0.00000	20	0
44 FR	0.00	0.00	0.00	0.00000	0.00000	20	0
46 FR	0.00	0.00	0.00	0.00000	0.00000	20	0
48 FR	0.00	0.00	0.00	0.00000	0.00000	20	0

Taille fabricant	Pays-Bas	Italie	Portugal	Espagne	Royaume-Uni	Allemagne
32 FR	30 NL	36 IT	32 PT	32 ES	6 UK	30 DE
34 FR	32 NL	38 IT	34 PT	34 ES	8 UK	32 DE
36 FR	34 NL	40 IT	36 PT	36 ES	10 UK	34 DE
38 FR	36 NL	42 IT	38 PT	38 ES	12 UK	36 DE
40 FR	38 NL	44 IT	40 PT	40 ES	14 UK	38 DE
42 FR	40 NL	46 IT	42 PT	42 ES	16 UK	40 DE
44 FR	42 NL	48 IT	44 PT	44 ES	18 UK	42 DE
46 FR	44 NL	50 IT	46 PT	46 ES	20 UK	44 DE
48 FR	46 NL	52 IT	48 PT	48 ES	22 UK	46 DE
50 FR	48 NL	54 IT	50 PT	50 ES	24 UK	48 DE