

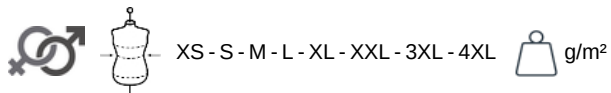
# KARIBAN

K657

## 3-In-1 parka

- PVC backing and heat-sealed seams for optimum waterproofing.
- 3-in-1: combined wind breaker and fleece jacket for optimum protection against the cold and bad weather.
- Extremely functional and versatile, perfect for professional use.

100% polyester outer with PVC coating. Water-resistant taped seams. 3-in-1 parka: dual-composition padding. Body: 100% polyester mesh. Sleeves: 100% polyester. Zip fastening and press stud placket. Fleece-lined neck. 3 zip pockets at the front with flap. Tear release adjustable cuffs. Press stud removable hood with mesh lining and stoppers. Inner zip access for decoration. Fleece jacket: 100% microfleece polyester. 100% polyester sleeve lining for easy removal. Zip fastening. 2 side pockets. Fleece jacket detachable by zip. Average weight size L : 1550g.



### More information

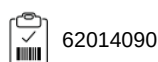
#### Logistic



#### Country of origin



#### Customs code



#### Washing instructions

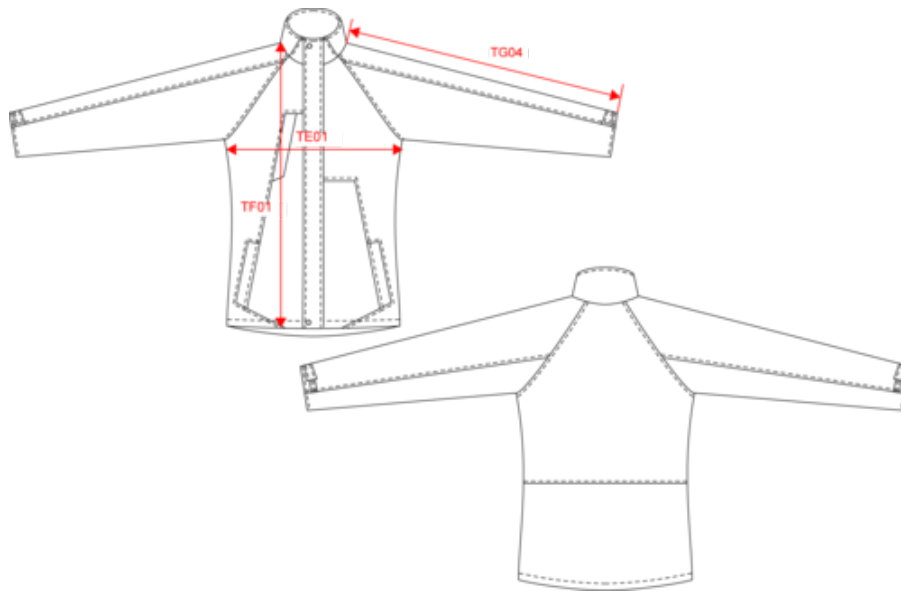


# KARIBAN

K657

3-In-1 parka

## Dimensions (cm)



Measurements in cm	XS	S	M	L	XL	XXL	3XL	4XL
TE01 - 1/2 chest width at 1.5cm below armhole	56.00	59.00	62.00	65.00	68.00	71.00	74.00	77.00
TF01 - Total height from HSP	77.25	79.25	81.25	83.25	85.25	87.25	89.25	91.25
TG04 - Raglan long sleeve length	93.00	80.75	82.50	84.25	86.00	87.75	89.50	91.25

# KARIBAN

K657

## 3-In-1 parka

### Colours information



**Black**

RVB : 35,35,37  
Pantone C : Black  
Pantone TCX : 19-4004TCX



**Navy**

RVB : 41,46,56  
Pantone C : 433C  
Pantone TCX : 19-4012TCX

### Logistic



1



10

Sizes	Width (cm)	Height (cm)	Length (cm)	Net weight (kg)	Gross weight (kg)	Pieces/Box	Pieces/Bundle
XS	0.00	0.00	0.00	0.00000	0.00000	10	0
S	0.00	0.00	0.00	0.00000	0.00000	10	0
M	0.00	0.00	0.00	0.00000	0.00000	10	0
L	0.00	0.00	0.00	0.00000	0.00000	10	0
XL	0.00	0.00	0.00	0.00000	0.00000	10	0
XXL	0.00	0.00	0.00	0.00000	0.00000	10	0
3XL	0.00	0.00	0.00	0.00000	0.00000	10	0
4XL	0.00	0.00	0.00	0.00000	0.00000	10	0