

# KARIBAN

**REFERENCE :** K632

**SIZES :** S\_M\_L\_XL\_XXL\_3XL\_4XL

**COMPOSITION :**

Main fabric : Nylon 210T AC coating - 70 For dark colors only  
100%polyamide

Main fabric : Nylon 210T milky coating 70 For light colors only  
100%polyamide

Lining 1 : Polytricot lining For top part of lining 100%polyester

Mesh : Mesh 65 For bottom part of lining 100%polyester

Lining 2 : Lining 210T For inner sleeves 100%polyester

**WEIGHT :**

Main fabric : 70 gsm

Main fabric : 70 gsm

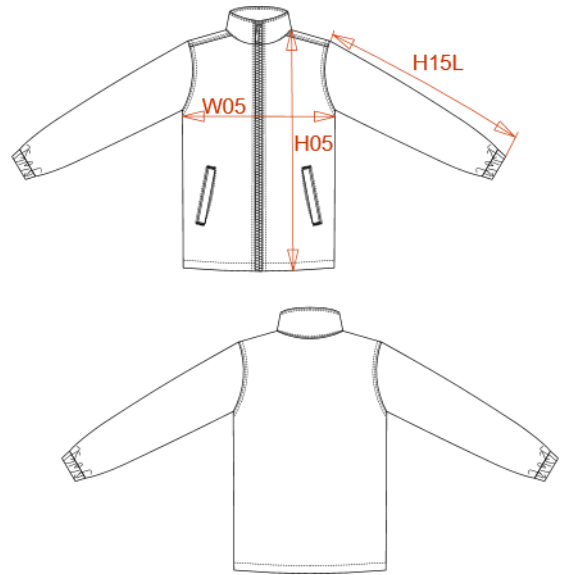
Lining 1 : 150 gsm

Mesh : 65 gsm

Lining 2 : 60 gsm

**ARTICLE WEIGHT :**

330 gr/pc



DESCRIPTION
<b>Français :</b> Coupe-vent doublé
<b>English :</b> Lined windbreaker
<b>Nederlands :</b> Gevoerde windbreaker
<b>Deutsch :</b> Gefütterte windjacke
<b>Español :</b> Cortaviento forrado
<b>Italiano :</b> Giacca a vento foderata
<b>Português :</b> Cortavento windbreaker

COLORS	PANTONE SERIGRAPHIE
Black	Black
Navy	433C
Red	200C

MEASUREMENT							
Description	S	M	L	XL	XXL	3XL	4XL
<b>H05 (M)</b> Hauteur totale / Total height	77,25	79,25	81,25	83,25	85,25	87,25	89,25
<b>W05 (M)</b> 1/2 largeur poitrine à 1.5cm de l'emmanchure / 1/2 chest width at 1.5cm below armhole	58	61	64	67	70	73	76
<b>H15L (M)</b> Longueur manche longue / Long sleeve length	64	65,50	67	68,50	70	71,50	73

CARE LABEL				

PACKING	
Box	25 pcs / box S-L => L:66cm W:46cm H:20cm GW:12.30kg NW:10.80kg XL-XXL => L:67cm W:48cm H:20cm GW:12.30kg NW:10.80kg 3XL => L:67cm W:48cm H:20cm GW:13.00kg NW:11.00kg 4XL => L:79cm W:56cm H:20cm GW:13.00kg NW:11.00kg