

KARIBAN

K582

Sherpa-lined fleece overshirt

- Microfleece construction lined with sherpa fleece.
- Super warm, soft and comfortable.
- 2 flap chest pockets.

100% polyester. Microfleece outer and sherpa inner. Very soft and warm overshirt. 2 flap chest pockets. Classic placket (2 spare buttons). Adjustable buttoned cuffs. Rounded hem. Certified STANDARD 100 by OEKO-TEX® CQ1007/8, IFTH.



S - M - L - XL - XXL - 3XL - 4XL



360 g/m²



More information

Logistic



1



10



Country of origin

BD - Bangladesh

Customs code



61143000

Washing instructions



Dark
Khaki /
Storm
Grey

Navy /
Storm
Grey

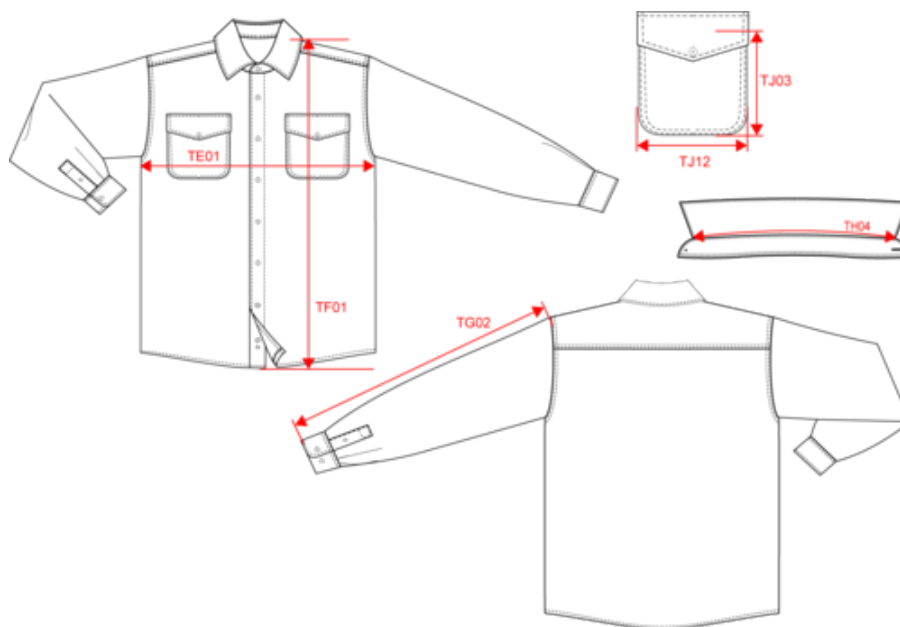


KARIBAN

K582

Sherpa-lined fleece overshirt

Dimensions (cm)



Measurements in cm	S	M	L	XL	XXL	3XL	4XL
TE01 - 1/2 chest width at 1.5cm below armhole	54.00	57.00	60.00	63.00	66.00	69.00	72.00
TF01 - Total height from HSP	75.50	77.50	79.50	81.50	83.50	85.50	87.50
TG02 - Long sleeve length	66.00	67.00	68.00	69.00	70.00	71.00	72.00
TH04 - Neckline length on collar from middle to middle	41.75	43.00	44.25	45.50	46.75	48.00	49.25
TJ03 - Chest patched pocket(s) height at side	13.00	13.00	14.00	14.00	15.00	15.00	15.00
TJ12 - Bottom patched pocket(s) top width	12.00	12.00	13.00	13.00	14.00	14.00	14.00

KARIBAN

K582

Sherpa-lined fleece overshirt

Colours information



Dark Khaki

RVB : 75,71,61
Pantone C : 418C
Pantone TCX : 19-0414TCX

Storm Grey

RVB : 97,96,99
Pantone C : 425C
Pantone TCX : 18-0201TCX



Navy

RVB : 41,46,56
Pantone C : 433C
Pantone TCX : 19-4012TCX

Storm Grey

RVB : 97,96,99
Pantone C : 425C
Pantone TCX : 18-0201TCX

Logistic



1



10

Sizes	Width (cm)	Height (cm)	Length (cm)	Net weight (kg)	Gross weight (kg)	Pieces/Box	Pieces/Bundle
S	40.00	27.00	60.00	5.00000	6.50000	10	1
M	40.00	27.00	60.00	5.50000	7.00000	10	1
L	40.00	27.00	60.00	6.00000	7.50000	10	1
XL	40.00	29.00	60.00	6.50000	8.00000	10	1
XXL	40.00	29.00	60.00	7.00000	8.50000	10	1
3XL	40.00	29.00	60.00	7.50000	9.00000	10	1
4XL	40.00	29.00	60.00	8.00000	9.00000	10	1