

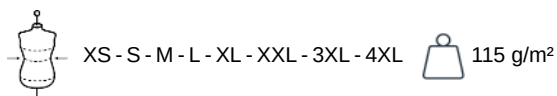
KARIBAN

K522

Men's fitted long-sleeved non-iron shirt

- Modern, comfortable and elegant.
- Slim fit that suits perfectly.
- Non-iron, easy-care fabric.

100% cotton micro twill. Non-iron fabric. Soft collar. Matching buttons. Double back yoke. Felled seams. Adjustable mitred button cuffs with button placket. 2 spare buttons. Shaped hem. Certified STANDARD 100 by OEKO-TEX® N° CQ 1007/7, IFTH.

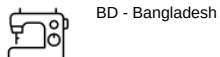


More information

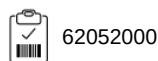
Logistic



Country of origin



Customs code



Washing instructions

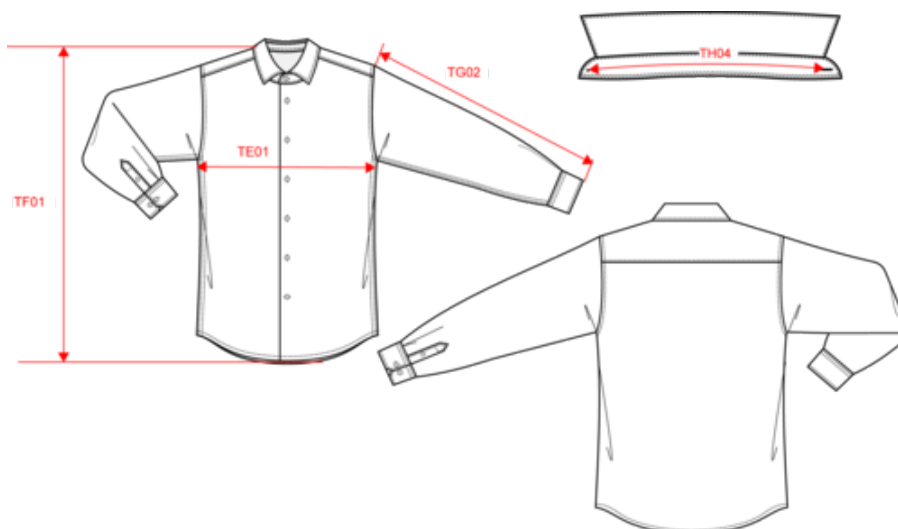


KARIBAN

K522

Men's fitted long-sleeved non-iron shirt

Dimensions (cm)



Measurements in cm	XS	S	M	L	XL	XXL	3XL	4XL
TE01 - 1/2 chest width at 1.5cm below armhole	48.00	51.00	54.00	57.00	60.00	63.00	66.00	69.00
TF01 - Total height from HSP	71.50	73.50	75.50	77.50	79.50	81.50	83.50	85.50
TG02 - Long sleeve length	63.00	64.00	65.00	66.00	67.00	68.00	69.00	70.00
TH04 - Neckline length on collar from middle to middle	39.40	40.60	41.80	43.00	44.20	45.40	46.60	47.80

KARIBAN

K522

Men's fitted long-sleeved non-iron shirt

Colours information



Black
RVB : 35,35,37
Pantone C : Black
Pantone TCX : 19-4004TCX



Bright Sky
RVB : 152,173,209
Pantone C : 535C
Pantone TCX : 15-4030TCX



White
RVB : 236,236,252
Pantone C : White
Pantone TCX : 11-0601TCX



Zinc
RVB : 61,62,65
Pantone C : 446C
Pantone TCX : 19-4205TCX

Logistic



1



12

Sizes	Width (cm)	Height (cm)	Length (cm)	Net weight (kg)	Gross weight (kg)	Pieces/Box	Pieces/Bundle
XS	0.00	0.00	0.00	0.00000	0.00000	12	0
S	0.00	0.00	0.00	0.00000	0.00000	12	0
M	0.00	0.00	0.00	0.00000	0.00000	12	0
L	0.00	0.00	0.00	0.00000	0.00000	12	0
XL	0.00	0.00	0.00	0.00000	0.00000	12	0
XXL	0.00	0.00	0.00	0.00000	0.00000	12	0
3XL	0.00	0.00	0.00	0.00000	0.00000	12	0
4XL	0.00	0.00	0.00	0.00000	0.00000	12	0