

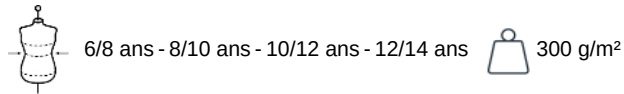
KARIBAN

K402

Kids' softshell jacket

- Three-layer softshell for ideal protection.
- Wind-breaker, breathable and waterproof technical membrane.
- Offers perfect comfort thanks to its elastic fabric.

Softshell 3-layer bonded fabric. 3000 gsm/24h breathable and 8000 mm water-resistant. 95% polyester/5% elastane outer layer. Breathable mid layer and microfleece thermal inner layer. Zip through front. 2 zipped pockets at the front. 1 zipped left sleeve pocket.

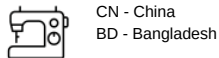


More information

Logistic



Country of origin



Customs code



Washing instructions



Also available in version



K400 K401



Aqua Blue Black Marl Grey Navy Red

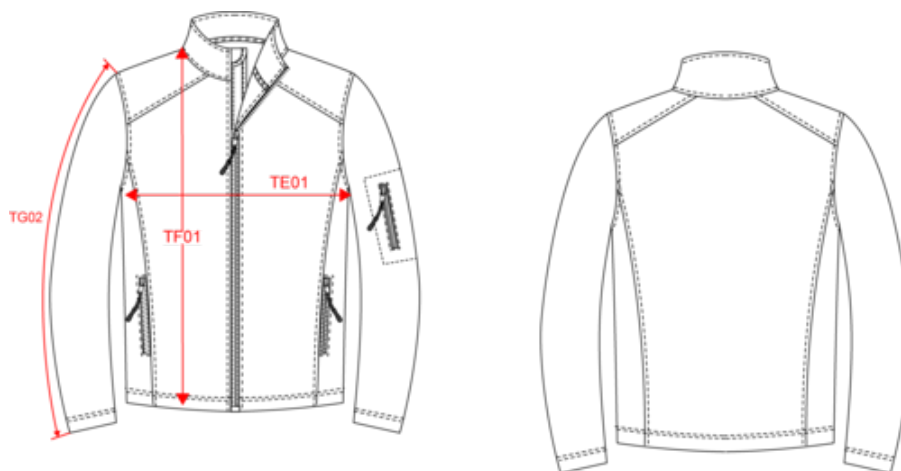


KARIBAN

K402

Kids' softshell jacket

Dimensions (cm)



Measurements in cm	6/8	8/10	10/12	12/14
TE01 - 1/2 chest width at 1.5cm below armhole	40.00	43.00	46.00	49.00
TF01 - Total height from HSP	50.70	55.50	60.30	65.10
TG02 - Long sleeve length	45.00	49.00	53.00	57.00

