

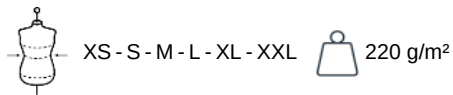
KARIBAN

K2001

Ladies' Supima® short sleeve polo shirt

- Slim fit, silky and pleasant feel.
- Supple and hard-wearing thanks to very long Supima® cotton fibres.
- Premium Collection. NO LABEL.

100% cotton. Piqué knit in Supima® cotton. Extremely fine and high-quality fabric. Silky and pleasant hand feel. Straight fit. Ribbed collar with decorative contrasting taped neck. Placket with 3 genuine mother-of-pearl buttons. Decorative seam finish at hem. Ribbed cuffs. No brand label at neck, only size tag for easy relabelling.



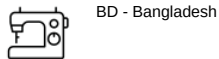
No Label

More information

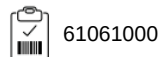
Logistic



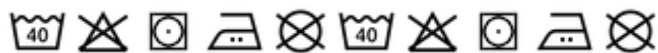
Country of origin



Customs code



Washing instructions



Also available in version



K2000

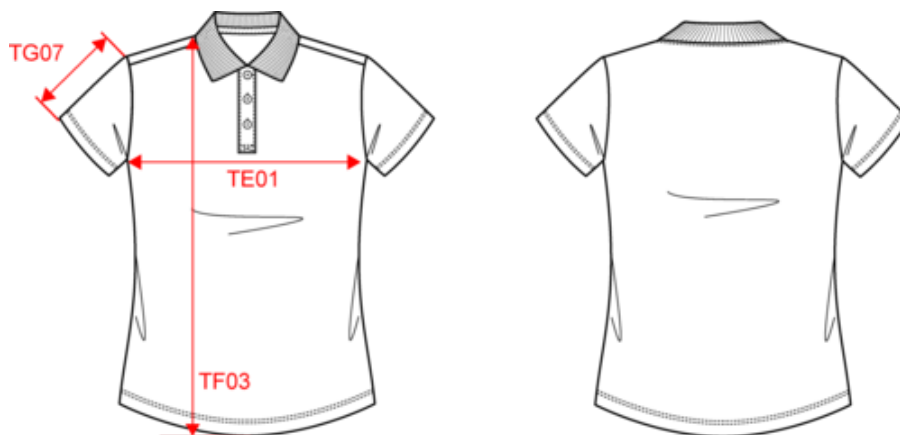


KARIBAN

K2001

Ladies' Supima® short sleeve polo shirt

Dimensions (cm)



Measurements in cm	XS	S	M	L	XL	XXL
TE01 - 1/2 chest width at 1.5cm below armhole	43.00	46.00	49.00	52.00	55.00	58.00
TF03 - Front total height from HSP	60.00	62.00	64.00	66.00	68.00	70.00
TG07 - Short sleeve length	12.25	13.00	13.75	14.50	15.25	16.00

KARIBAN

K2001

Ladies' Supima® short sleeve polo shirt

Colours information



Black

RVB : 35,35,37
Pantone C : Black
Pantone TCX : 19-4004TCX



Grey Heather

RVB :
Pantone C : Based on 417C
Pantone TCX : Based on 18-5203TCX



Navy

RVB : 41,46,56
Pantone C : 433C
Pantone TCX : 19-4012TCX



White

RVB : 236,236,252
Pantone C : White
Pantone TCX : 11-0601TCX

Logistic



5



30

Sizes	Width (cm)	Height (cm)	Length (cm)	Net weight (kg)	Gross weight (kg)	Pieces/Box	Pieces/Bundle
XS	40.00	16.00	60.00	4.20000	5.50000	30	0
S	40.00	16.00	60.00	4.50000	5.80000	30	0
M	40.00	16.00	60.00	4.90000	6.20000	30	0
L	40.00	16.00	60.00	5.20000	6.50000	30	0
XL	40.00	16.00	60.00	5.60000	6.90000	30	0
XXL	40.00	16.00	60.00	5.90000	7.20000	30	0