

# KARIBAN

K2000

## Men's Supima® short sleeve polo shirt

- Slim fit, silky and pleasant feel.
- Supple and hard-wearing thanks to very long Supima® cotton fibres.
- Premium Collection. NO LABEL.

100% cotton. Piqué knit in Supima® cotton. Extremely fine and high-quality fabric. Silky and pleasant hand feel. Straight fit. Ribbed collar with decorative contrasting taped neck. Placket with 2 genuine mother-of-pearl buttons. Decorative seam finish at hem. Ribbed cuffs. No brand label at neck, only size tag for easy relabelling.



S - M - L - XL - XXL - 3XL



220 g/m<sup>2</sup>

## No Label

### More information

#### Logistic



5



30



BD - Bangladesh

#### Customs code



61051000



Black



Grey  
Heather



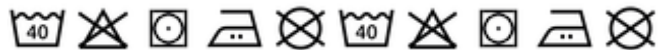
Navy



White



#### Washing instructions



#### Also available in version



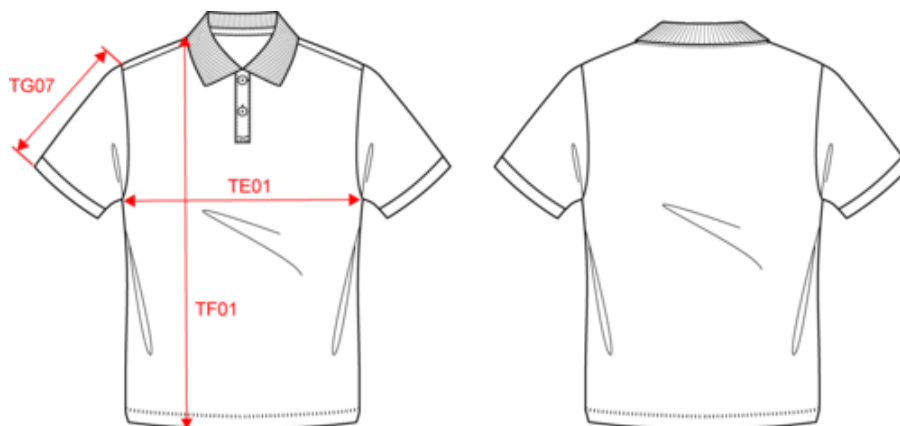
K2001

# KARIBAN

K2000

## Men's Supima® short sleeve polo shirt

### Dimensions (cm)



Measurements in cm	S	M	L	XL	XXL	3XL
TE01 - 1/2 chest width at 1.5cm below armhole	50.00	53.00	56.00	59.00	62.00	65.00
TF01 - Total height from HSP	70.00	72.00	74.00	76.00	78.00	80.00
TG07 - Short sleeve length	22.25	23.00	23.75	24.50	25.25	26.00

# KARIBAN

K2000

## Men's Supima® short sleeve polo shirt

### Colours information



#### Black

RVB : 35,35,37  
Pantone C : Black  
Pantone TCX : 19-4004TCX



#### Grey Heather

RVB :  
Pantone C : Based on 417C  
Pantone TCX : Based on 18-5203TCX



#### Navy

RVB : 41,46,56  
Pantone C : 433C  
Pantone TCX : 19-4012TCX



#### White

RVB : 236,236,252  
Pantone C : White  
Pantone TCX : 11-0601TCX

### Logistic



5



30

Sizes	Width (cm)	Height (cm)	Length (cm)	Net weight (kg)	Gross weight (kg)	Pieces/Box	Pieces/Bundle
S	40.00	16.00	60.00	5.50000	6.80000	30	0
M	40.00	16.00	60.00	6.00000	7.30000	30	0
L	40.00	16.00	60.00	6.20000	7.50000	30	0
XL	40.00	16.00	60.00	6.70000	8.00000	30	0
XXL	40.00	16.00	60.00	7.10000	8.40000	30	0
3XL	40.00	16.00	60.00	7.40000	8.70000	30	0