



WK001

B&C ID.332 Crew /kids



Composition

80% pre-shrunk ring-spun cotton, (Investing in Better Cotton*) / 20% recycled polyester - RCS certified

* By choosing our cotton products, you're supporting our investment in Better Cotton's mission

Size

3-4, 5-6, 7-8, 9-11, 12-13

Packing

5 pcs/pack & 40 pcs/carton

Weight

280 g/m²

Details

Meet the unmatched sustainable modern classic for kids. This gender-neutral crew neck sweatshirt, for boys & girls from kid to teen, with a comfortable dropped shoulder for ease of movement, will withstand any wear and tear! Made from soft, durable 100% cotton face fabric for excellent printability and neck label free for easy customisation. Pair it with the B&C.ID.000 Sweatpant /kids for a complete, comfortable look; and combine it with adult B&C ID.332 Crew for coordinated looks.

Features

Engineered for boys & girls (gender-neutral), from kid to teen

Side seamed

Classic modern relaxed fit for all occasions

100% cotton face with excellent printability and soft handfeel

Set-in sleeves with slight dropped shoulder enhance mobility

Classic cuffs and bottom hem in 1x1 rib with elastane

5 sizes: 3/4 to 12/13yrs

Wide range of 10 classic and contemporary colours to cover any need: from promotional to schools, teams and activewear

"B&C No Label" solution for easy rebranding

Sustainability

B&C, now sourcing 100% more sustainable fibres

Supporting responsible cotton production through Better Cotton*

Contains certified recycled materials

Each B&C ID. 332 Crew /kids contains on average 7 post-consumer recycled PET bottles (550ml)

* This product is sourced via a system of mass balance and therefore may not contain Better Cotton.

Mix&Match

Pair it with the B&C ID.000 Sweatpant /kids for a full look

Matching adult style, from 15 yrs+: B&C ID.332 Crew

Colors



Sustainability



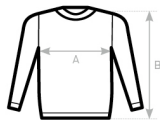
Care instructions



All our products are tested and approved using all main print techniques.

View on the website





B&C ID.332 CREW /KIDS WK001	1/2	3/4	5/6	7/8	9/11	12/13
	80-92	98-104	110-116	122-128	134-146	152-164
A HALF CHEST	-	34	37	40	43,5	47
B BODY LENGTH FROM NECK POINT	-	47	50	53	56,5	60

View on the website

